

Culligan®

ULTRA LINE

Softener

HA 200-1400 CE

HB 770-1550



The Culligan Ultra Line softeners range, for its exchange capacity and flow rates, fits with small and medium industry needs.

This series includes many models and a wide range of capacities, as well as a range of accessories, which can personalize the unit according to the customer's needs.

When softened water is also intended for food purposes (hotels, tourist resorts, commercial and residential centers, etc.), a dosing pump will be coupled with the softener for the automatic disinfection of resins, according to the Ministerial Decree N° 443 – 21/12/1990r

Culligan Ultra Line softeners are manufactured in steel, and internally protected by a food-grade layer of epoxy paint and externally covered with a thermosetting painting and kiln fired. Automatic valves harnesses control the different operating phases.

The regeneration can be started according to different criteria: the Culligan expert will help you in choosing the one fitting to your needs.

As default:

- **Time-clock control:** an electronic card starts the regeneration at pre-set time intervals.

As option:

- **volume control:** a device (including a flow-meter) starts the regeneration after a pre-set volume of water treated.
- **Alternate regeneration:** the volume control principle can be applied to two softeners operating in alternant the softened water supply to the service is uninterrupted.
- **Quality control:** a device which "senses" the product water quality and starts the regeneration whenever necessary.

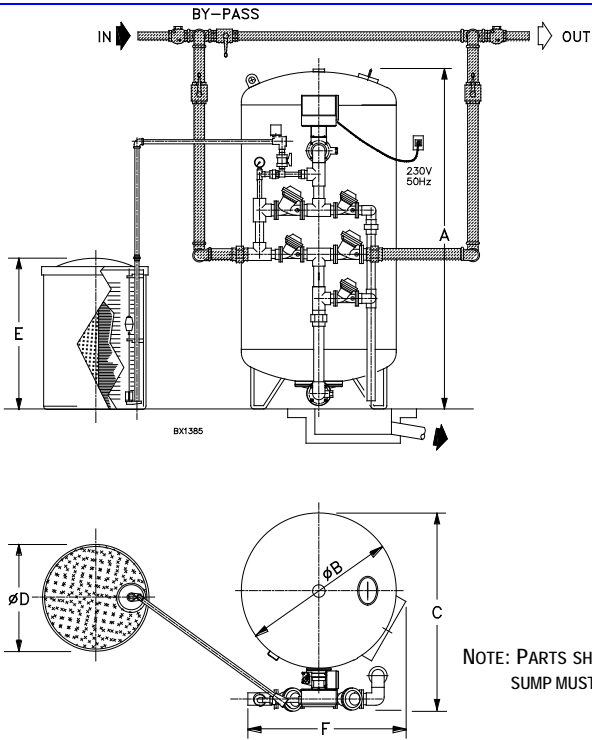
About Culligan

For over seventy years Culligan has led the way in water treatment technology supplying our customers with safe high quality water for drinking, cooking, cleaning, bathing and manufacturing, from the smallest to the largest applications, commercial and industrial market sectors.

The Culligan products and technology used in these applications represent an ongoing commitment to delivering the very best water treatment solutions for our customers. As a result of continuous development and review, the Culligan range is one of the most comprehensive available within the market today.

**Culligan (UK) Ltd. Culligan House, Unit 3 The Gateway Centre, Coronation Road
High Wycombe, Bucks, HP12 3SU.**

Tel: 01494 441286 Email: commercial@culligan.co.uk www.culligan.co.uk



Model	Dimensions mm					
	A	B	C	D	E	F
HA 200	1915	500	735	715	1310	735
HA 230	1915	500	735	715	1310	735
HA 290	1930	600	860	850	1320	800
HA 320	1930	600	860	850	1320	800
HA 430	1980	750	1011	1025	1290	840
HA 510	1980	750	1011	1025	1290	840
HA 770	2056	950	1215	1070	1360	980
HA 850	2056	950	1215	1070	1360	980
HA 1200	2172	1200	1465	1580	1260	1170
HA 1400	2172	1200	1465	1580	1260	1170
HB 770	2056	950	1203	1070	1360	1150
HB 850	2056	950	1203	1070	1360	1150
HB 1200	2172	1200	1454	1580	1260	1260
HB 1400	2172	1200	1454	1580	1260	1260
HB 1550	2392	1400	1644	1580	1260	1321

NOTE: PARTS SHOWN IN GRAY ARE NOT INCLUDED IN CULLIGAN STANDARD SUPPLY. DIMENSIONS OF DRAIN SUMP MUST BE SIZED IN ACCORDANCE TO OUTLET FLOW RATE OF EQUIPMENT DRAIN.

TECHNICAL SPECIFICATIONS

Ultra Line	HA	200	230	290	320	430	510	770	850	1200	1400	
Flow rate with 0.8 bar pressure loss	m^3/h	11	10	20	19	20	20	23	21	22	21	
Flow rates max	m^3/h	18	18	26	26	30	30	34	34	34	34	
Pressure loss at max flow rate	bar	1,6	1,6	1,3	1,4	1,6	1,8	1,5	1,7	1,5	1,7	
IN/OUT Fittings		1½"				2"						

Ultra Line	HB							770	850	1200	1400	1550
Flow rate with 0.8 bar pressure loss	m^3/h							38	34	38	34	41
Flow rates max	m^3/h							50	50	50	50	60
Pressure loss at max flow rate	bar							1,7	1,9	1,7	1,9	1,8
IN/OUT Fitting								2½"				

HA-HB Standard operating												
Resin - Cullux		198	226,5	283	311	424,5	510	764	849	1217	1415	1500
Cyclic capacity min. and max	$cf.m^3$	734	838	1047	1150	1570	1887	2827	3141	4503	5235	5549
		1188	1359	1698	1869	2550	3060	4587	5097	7136	8325	8825
Salt consumption	kg	14	16	20	22	30	36	54	60	86	100	111
		40	45	57	62	85	102	153	170	243	283	300
Water consumption per regeneration	m^3	1,10	1,10	1,55	1,55	2,40	2,40	2,85	2,85	5,10	5,10	5,5
Resin tank *	Weight operating	495	530	715	750	1080	1160	1830	1950	2810	3010	4200
	Weight shipping	395	425	570	600	860	930	1470	1560	2250	2430	2580
Salt tank	Weight operating	280	285	390	390	610	615	700	700	2250	2250	2250
	Weight shipping	27	30	30	30	55	60	60	60	100	100	100

Operating Pressure: min. 2 bar – max. 7 bar
 Temperature: min. 2 °C - max 40 °C
 Power Supply 230V-50Hz/110V-60Hz/24V-50Hz
 Regeneration time: 70 minutes.

- The exchange capacity is based on water having 40°f (400 ppm CaCO3) of total hardness, 500 ppm TDS, no oil, no colour, no turbidity and a continuous service flow rate. However, it may change depending on other parameter, such as chlorides, available pressure, discontinuous flow of treated water, the quality and the type of the regenerant used.

* Consider 10 kg more for HB model

**Culligan (UK) Ltd. Culligan House, Unit 3 The Gateway Centre, Coronation Road
 High Wycombe, Bucks, HP12 3SU.**

Tel: 01494 441286 Email: commercial@culligan.co.uk www.culligan.co.uk